



**INSTRUCTIONS PERTAINING TO RISK OF FIRE OR INJURY TO PERSONS. READ ALL INSTRUCTIONS. IMPORTANT SAFETY INSTRUCTIONS. SAVE THESE INSTRUCTIONS.**

**DANGER - RISK OF SHOCK - DISCONNECT POWER BEFORE INSTALLATION! Please read all instructions before installation.**

- Keep these instructions for future reference.
- Must be installed by a qualified electrician in accordance with national and local standards. Designplan is not responsible for fixtures installed without regard to these standards.
- Unauthorized alterations or tampering of product voids warranty.
- The main power connection must be in accordance with local electrical codes.
- Suitable for OUTDOOR applications.



**IP65 IK07**

**ATTENTION:** For Wall/Ceiling - It is the contractor's responsibility to caulk around all the edges between the fixture and the mounting surface to satisfy wet label requirements.

For In-Grade - It is the contractor's responsibility to seal the conduit with "Great Stuff" aerosol seal that prevents water and moisture penetration for ultimate protection. Contractor **MUST** use gel-filled wire nuts.

## Maintenance

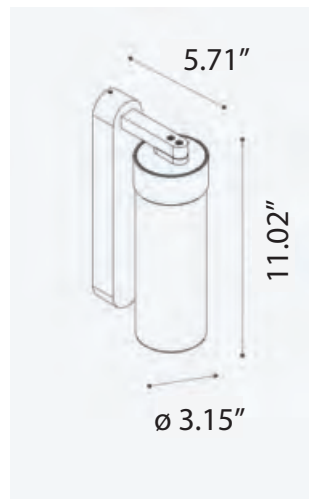
Scheduled maintenance must be carried out once a year on all lighting devices, regardless of appliance class and type of use. It must include the following operations:

- Periodically clean fixtures to remove dirt from gratings and screw heads.
- Check tightness of screws on various parts of the device.
- Check that all cable glands and cables are intact and tight. Check that the glass or plastic lens is intact, and replace it if broken or damaged.
- The internal components such as the ballast, driver, washers and screws must not show clear signs of oxidation or rust. Clear traces of rust and oxidation will indicate the presence of water inside the device.
- In the case of damage, the components must be replaced by original components or spare parts.

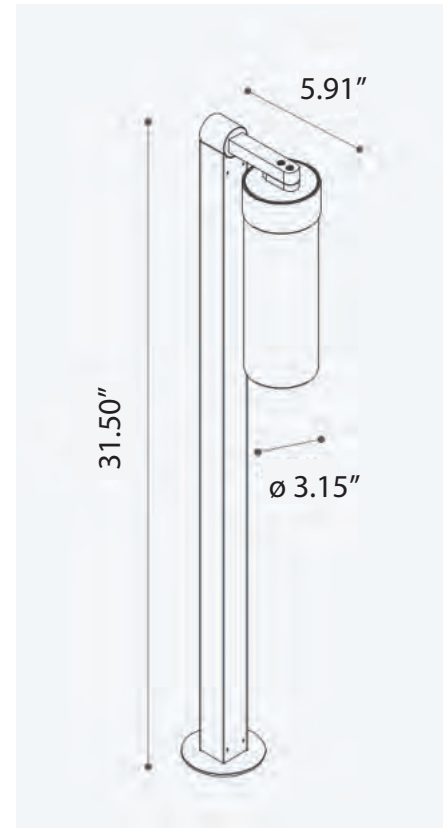
## FIXTURE DIMENSIONS:



Gler Sun ceiling

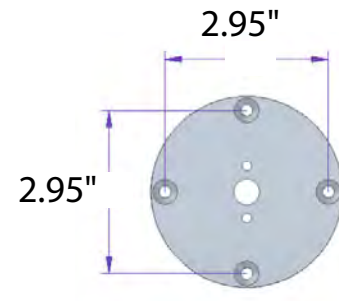
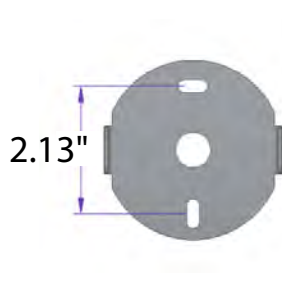


Gler Sun wall



Gler Sun bollard

## MOUNTING DISTANCE:

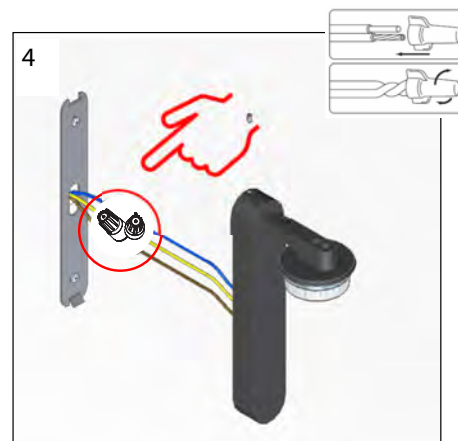
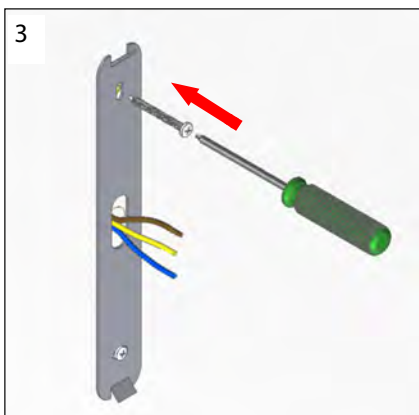
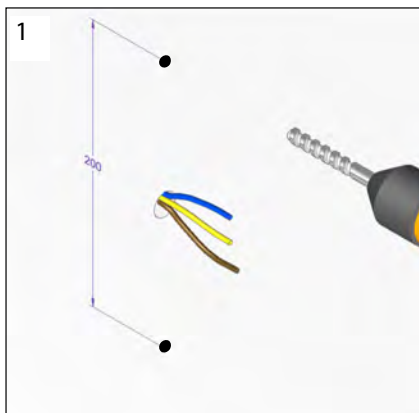


## FIXTURE INSTALLATIONS:

### WALL MOUNTING:



- It is the contractor's responsibility to caulk around the edges between the fixture and the mounting surface, to satisfy wet label requirements.



Use gel-filled waterproof wire-nuts for wire connections.

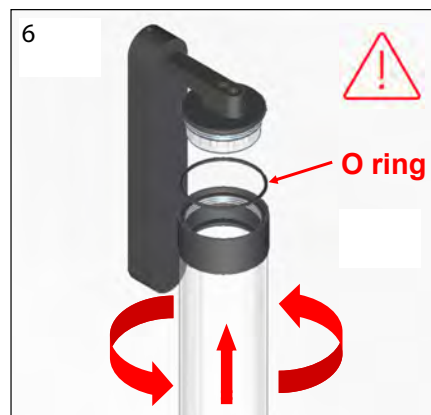


### WARNING!

Position the "O" ring before tightening the ring nut on the lamp body!

Tighten the threaded ring nut well.

The absence of the gasket will invalidate the guarantee against any water infiltrations.



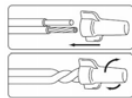
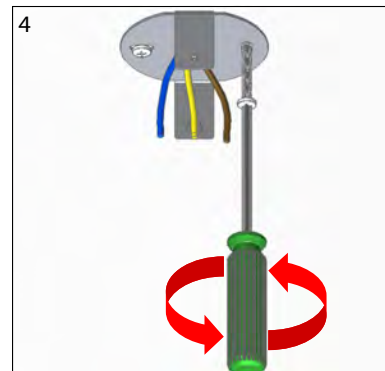
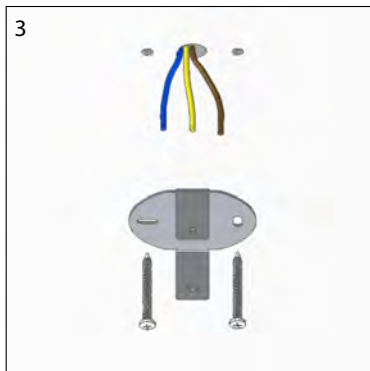
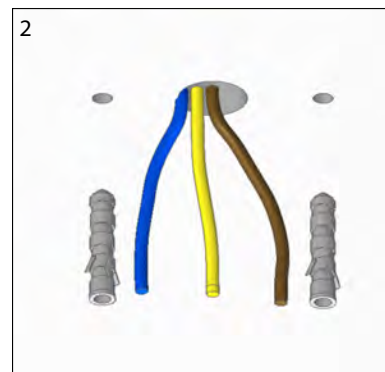
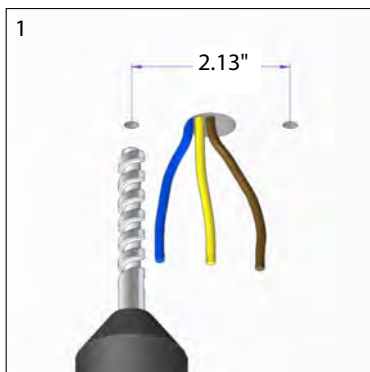
# GLER SUN WALL, CEILING, BOLLARD

9W, REMOTE 24VAC

designplan®

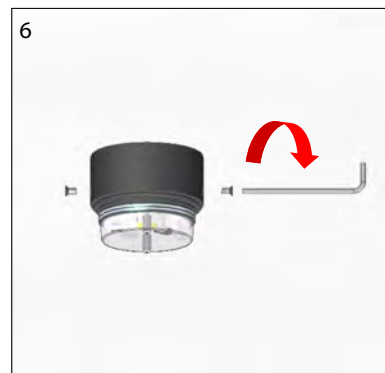
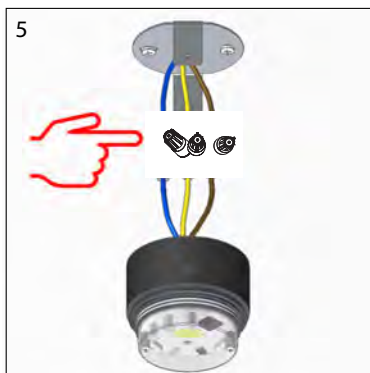
installation instructions

## CEILING MOUNTING:



Use gel-filled waterproof wire-nuts for wire connections.

- It is the contractor's responsibility to caulk around the edges between the fixture and the mounting surface, to satisfy wet label requirements.



# GLER SUN WALL, CEILING, BOLLARD



9W, REMOTE 24VAC

installation instructions

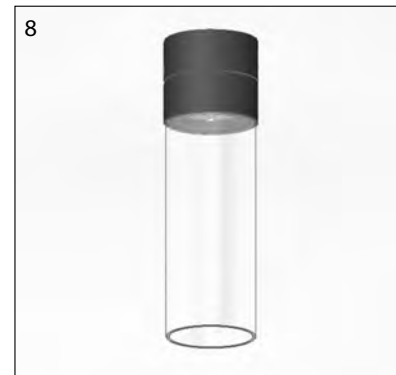
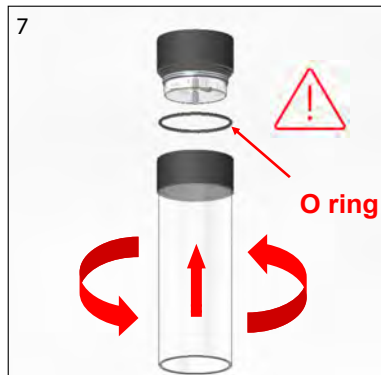


## WARNING!

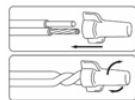
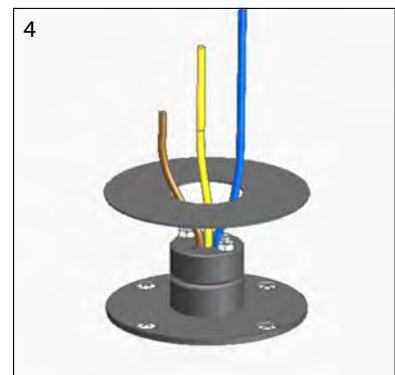
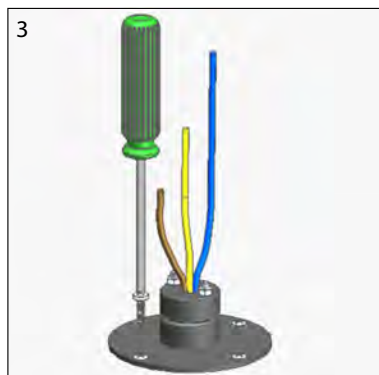
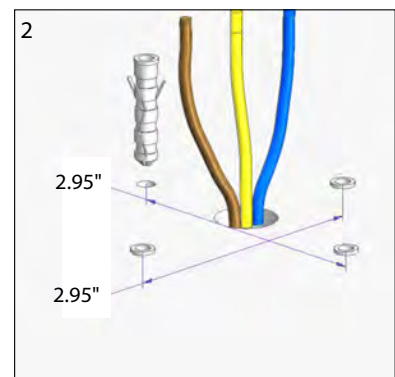
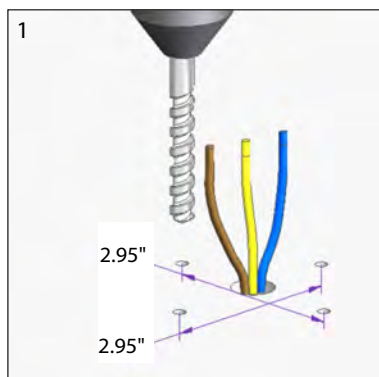
Position the "O" ring before tightening the ring nut on the lamp body!

Tighten the threaded ring nut well.

The absence of the gasket will invalidate the guarantee against any water infiltrations.

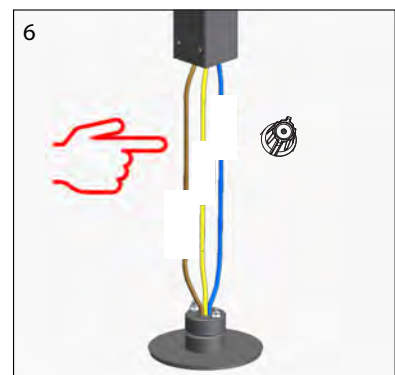
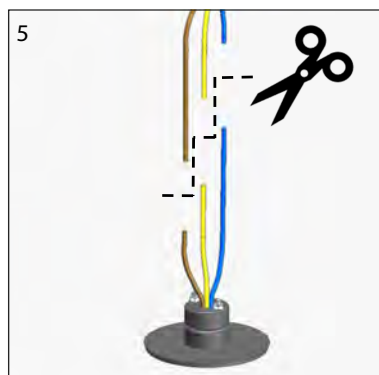


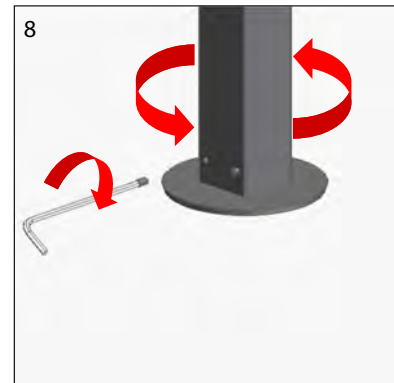
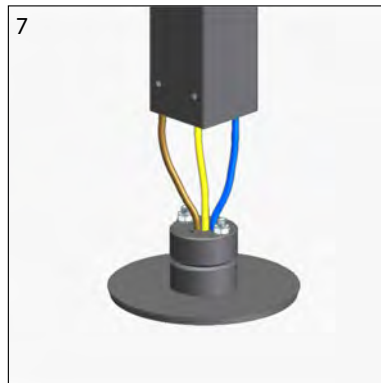
## BOLLARD MOUNTING:



Use gel-filled waterproof wire-nuts for wire connections.

- It is the contractor's responsibility to caulk around the edges between the fixture and the mounting surface, to satisfy wet label requirements.



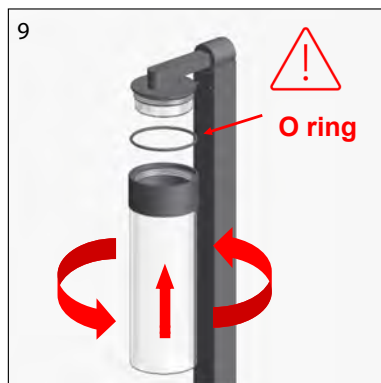


## WARNING!

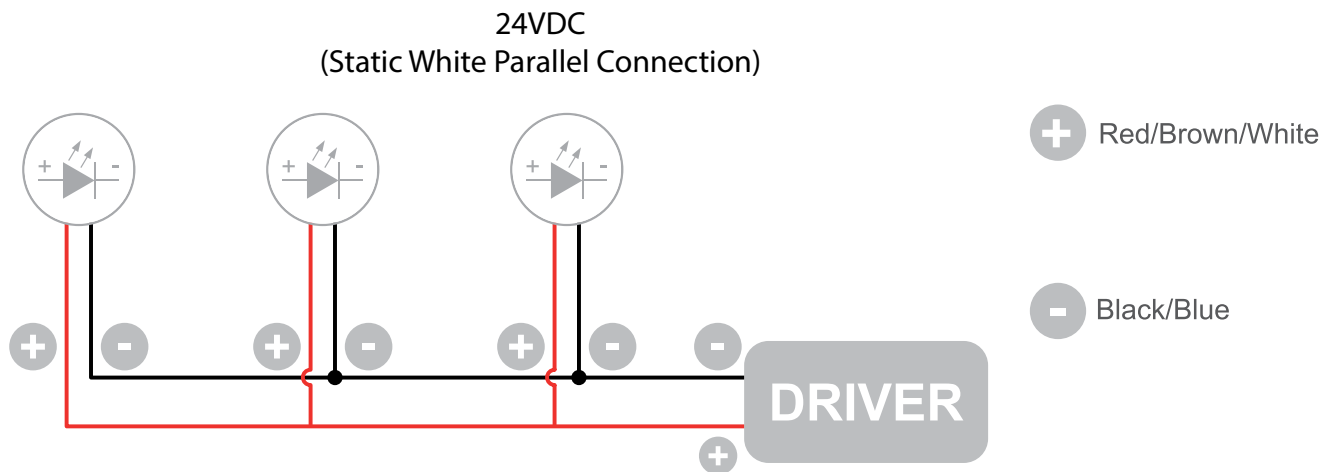
Position the "O" ring before tightening the ring nut on the lamp body!

Tighten the threaded ring nut well.

The absence of the gasket will invalidate the guarantee against any water infiltrations.



## Wiring Diagram



The individual lamps must be connected in parallel. Only power up the system once all the lamps have being connected.

- Only power up the system once all the lamps are connected. Connecting an individual lamp to an active power supply may cause the lamp to break due to over-voltage.
- Lamps and power supply units must be installed in well-ventilated boxes or locations to allow a natural heat diffusion and avoid the devices overheating.
- On the power system, install a surge protection device to reduce the intensity of any voltage spikes to protect the lighting fixtures from the risk of damage.
- Fixture NOT suitable for covering with thermally insulating material.