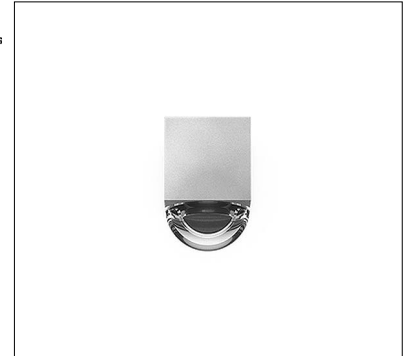


# UBICA C-30 AR

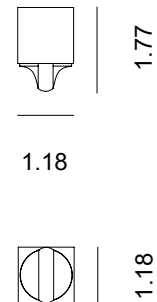
UBICA is a family of IP65-rated, stainless steel fixtures with a cube shape, suitable for wall, ceiling, suspension, or floor mounting installation. They offer diffuse illumination or blade of light for architectural accent solutions, and are available in 4 color temperatures and 3 standard Hard Coat Treatment finishes. UBICA C-30 AR is a surface mounted version with a blade optic lens for ceiling mounting or architectural lighting of facades.



## TECHNICAL DATA

<b>Wattage</b>	2W
<b>Power Supply</b>	Remote 700mA, not included. See page 2
<b>Construction</b>	Body: AISI 316L Stainless Steel Lens: Polycarbonate
<b>CCT</b>	2200K, 2700K, 3000K, 4000K
<b>CRI</b>	>80
<b>BUG Rating</b>	B0-U2-G0
<b>Delivered Lumens</b>	154 lm (3000K)
<b>Efficacy</b>	77 lm/W (3000K)
<b>Optics</b>	Blade
<b>Lumen Maintenance</b>	L80, B10 @100.000h Ta=25°C
<b>Hard Coat Finishes</b>	Inox Natural, Inox Graphite, Inox Bronze
<b>Fixture Dimensions</b>	1.18" l x 1.18" w x 1.77" h
<b>IP Rating</b>	IP65
<b>Impact Resistance</b>	IK08
<b>Warranty</b>	2 Years Extendable to 5 Years

Fixture Dimensions



**Hard Coating Treatment** is the surface treatment of all the products by Stral Lighting. It is not a skin of color, but instead is a process that allows for the color to be absorbed all the way through. If a product is scratched, the color beneath is the same as the color on the surface. It guarantees a high superficial resistance to corrosion and atmospheric agents, as well as making the products anti-fingerprint and anti-stain. Available in three finishes Inox Natural, Inox Graphite and Inox Bronze.

## ORDERING INFORMATION

Example: SPT9012026B.US. Power Supplies / Accessories ordered separately.

SPT90120		6		.US
<b>Model No.</b>	<b>CCT</b>	<b>Optics</b>	<b>Finishes</b>	
SPT90120	1 - 2200K 2 - 2700K 3 - 3000K 4 - 4000K	6 - Blade	N - Inox Natural G - Inox Graphite B - Inox Bronze	.US

Job Name/Date:

Fixture Type Designation:

## SUGGESTED POWER SUPPLIES

700mA

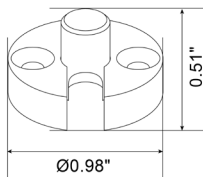
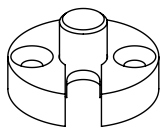
Part Number	Description	Input/Output	# of Fixtures
<a href="#">PPLT00537</a>	Non-Dim	120-277VAC to 700mA, 4W, Class 2	1-1
<a href="#">PPLT00498</a>	Phase Dim (120V only)	120VAC to 700mA, 12W, Class 2	1-2
<a href="#">PPLT00261</a>	Leading / Trailing Edge Dimming to 10% (120V only)	120-277VAC to 700mA, 32W, Class 2	7-15
<a href="#">PPLT00467-P</a>	0-10V Dimming to 1.0%	120-277VAC to 700mA, 50W, Class 2, DAMP	1-18
<a href="#">PPLT00561-P</a>	0-10V Dimming to 0.1%	120-277VAC to 700mA, 100W, Class 2	2-18

## Suggested Lutron Compatible

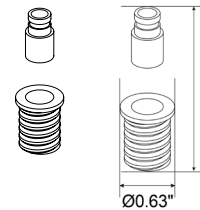
Part Number	Option	Lutron SKU	Dim Range	Description	Input/Output	# of Fixtures
<a href="#">PPLT00515</a>	L3DAE / L3DA3W	L3DA	100%-1%	Hi-Lume™ 1% EcoSystem™ or 1% 3-Wire LED Driver	120-277VAC to 700mA, 14W, Class 2	3-6
<a href="#">PPLT00635</a>	PEQ0E	PEQ0	100%-0.1%	Hi-Lume Premier 0.1% EcoSystem™ LED Driver F2B	120-277VAC to 700mA, 20W, Class 2	4-9
<a href="#">PPLT00181</a>	L3DAE / L3DA3W	L3DA	100%-1%	Hi-Lume™ 1% EcoSystem™ or 1% 3-Wire LED Driver	120-277VAC to 700mA, 38W, Class 2	11-17

For other power supply options consult factory.

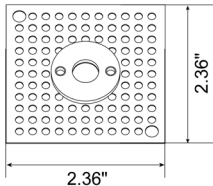
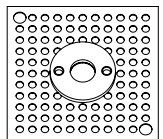
## ACCESSORIES - Installation



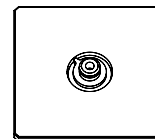
**PT70006**  
Wall Anchoring Plate



**PT70005**  
Corrugated Plug - Wood



**PT70009**  
Corrugated Wall Plate  
Compatible with brick and plasterboard walls



**PT70010**  
Cover Flange



### Silk-screened Tempered Glass Cover Flange

for UBICA C-30 AR, W-30 and C-30

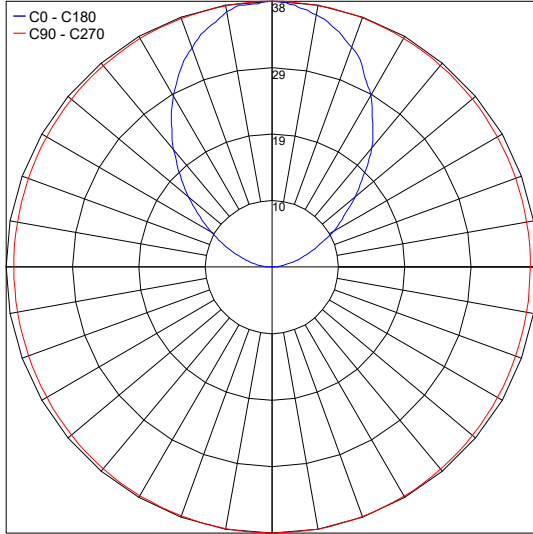
Job Name/Date:

Fixture Type Designation:

## PHOTOMETRIC DATA

NOTE: All photometry is 3000K

Maximum Candela = 38.5



PHOTOMETRIC FILENAME : UBICA C-30 AR 3000K BRONZE - PT9012036B.IES

Job Name/Date:

Fixture Type Designation: