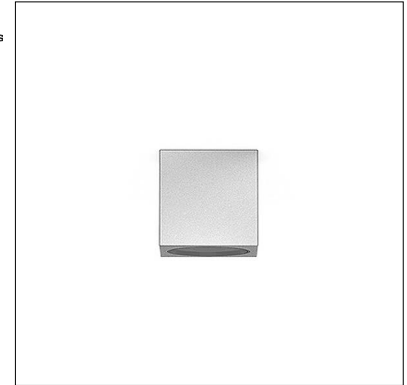


UBICA C-30

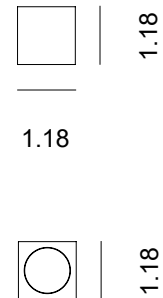
UBICA is a family of IP65-rated, stainless steel fixtures with a cube shape, suitable for wall, ceiling, suspension, or floor mounting installation. They offer diffuse illumination or blade of light for architectural accent solutions, and are available in 4 color temperatures and 3 standard Hard Coat Treatment finishes. UBICA C-30 is the regular ceiling mounted version.



TECHNICAL DATA

Wattage	2W
Power Supply	Remote 700mA, not included. See page 2
Construction	Body: AISI 316L Stainless Steel Lens: Polycarbonate
CCT	2200K, 2700K, 3000K, 4000K
CRI	>80
Delivered Lumens	279 lm (3000K)
Efficacy	139.5 lm/W (3000K)
Optics	20°, 40°, Wide
Lumen Maintenance	L80, B10 @100.000h Ta=25°C
Hard Coat Finishes	Inox Natural, Inox Graphite, Inox Bronze
Fixture Dimensions	1.18" l x 1.18" w x 1.18" h
IP Rating	IP65
Impact Resistance	IK08
Warranty	2 Years Extendable to 5 Years

Fixture Dimensions



Hard Coating Treatment is the surface treatment of all the products by Stral Lighting. It is not a skin of color, but instead is a process that allows for the color to be absorbed all the way through. If a product is scratched, the color beneath is the same as the color on the surface. It guarantees a high superficial resistance to corrosion and atmospheric agents, as well as making the products anti-fingerprint and anti-stain. Available in three finishes Inox Natural, Inox Graphite and Inox Bronze.

ORDERING INFORMATION

Example: SPT9012024B.US. Power Supplies / Accessories ordered separately.

SPT90120				.US
Model No.	CCT	Optics	Finishes	
SPT90120	1 - 2200K 2 - 2700K 3 - 3000K 4 - 4000K	0 - 20° 1 - 40° 4 - Wide	N - Inox Natural G - Inox Graphite B - Inox Bronze	.US

Job Name/Date:

Fixture Type Designation:

SUGGESTED POWER SUPPLIES

700mA

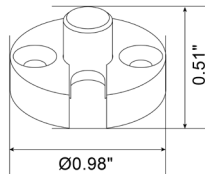
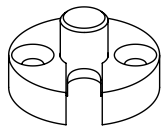
Part Number	Description	Input/Output	# of Fixtures
PPLT00537	Non-Dim	120-277VAC to 700mA, 4W, Class 2	1-1
PPLT00498	Phase Dim (120V only)	120VAC to 700mA, 12W, Class 2	1-2
PPLT00261	Leading / Trailing Edge Dimming to 10% (120V only)	120-277VAC to 700mA, 32W, Class 2	7-15
PPLT00467-P	0-10V Dimming to 1.0%	120-277VAC to 700mA, 50W, Class 2, DAMP	1-18
PPLT00561-P	0-10V Dimming to 0.1%	120-277VAC to 700mA, 100W, Class 2	2-18

Suggested Lutron Compatible

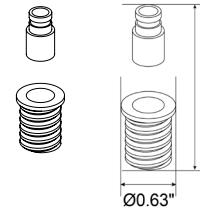
Part Number	Option	Lutron SKU	Dim Range	Description	Input/Output	# of Fixtures
PPLT00515	L3DAE / L3DA3W	L3DA	100%-1%	Hi-Lume™ 1% EcoSystem™ or 1% 3-Wire LED Driver	120-277VAC to 700mA, 14W, Class 2	3-6
PPLT00635	PEQ0E	PEQ0	100%-0.1%	Hi-Lume Premier 0.1% EcoSystem™ LED Driver F2B	120-277VAC to 700mA, 20W, Class 2	4-9
PPLT00181	L3DAE / L3DA3W	L3DA	100%-1%	Hi-Lume™ 1% EcoSystem™ or 1% 3-Wire LED Driver	120-277VAC to 700mA, 38W, Class 2	11-17

For other power supply options consult factory.

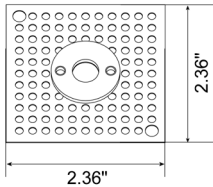
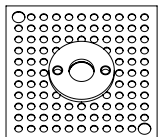
ACCESSORIES - Installation



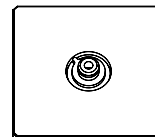
PT70006
Wall Anchoring Plate



PT70005
Corrugated Plug - Wood



PT70009
Corrugated Wall Plate
Compatible with brick and plasterboard walls



PT70010
Cover Flange



Silk-screened Tempered Glass Cover Flange
for UBICA C-30 AR, W-30 and C-30

Job Name/Date:

Fixture Type Designation:

ACCESSORIES - Installation



CRD200-R3
Ceiling Rose D200
3 lamps



CRD200-R5
Ceiling Rose D200
5 lamps



CRD200-R7
Ceiling Rose D200
7 lamps



CRL250-R3
Ceiling Rose L250
3 lamps



CRL250-R5
Ceiling Rose L250
5 lamps

ORDERING INFORMATION for CEILING ROSE

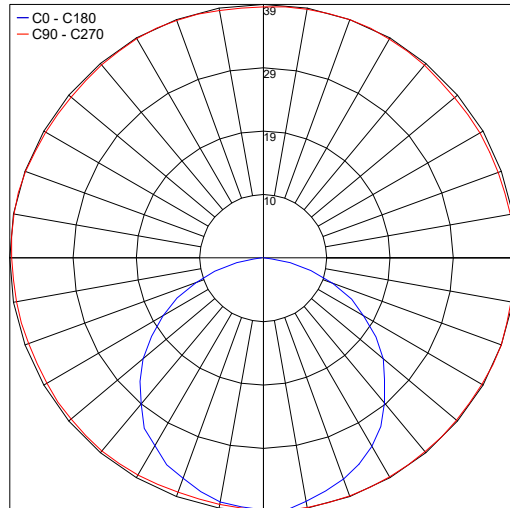
Example: *GRA20K27CRD200-R5.US*

				.US
Finish	Optics	CCT	Ceiling Rose Code	
NAT - Inox Natural HCT	20 - 20°	K27 - 2700K	CRD200-R3 - Ceiling Rose D200 - 3	.US
GRA - Inox Graphite HCT	40 - 40°	K3 - 3000K	CRD200-R5 - Ceiling Rose D200 - 5	
BRN - Inox Bronze HCT	WD - Wide	K4 - 4000K (on request)	CRD200-R7 - Ceiling Rose D200 - 7	
			CRL250-R3 - Ceiling Rose L250 - 3	
			CRL250-R5 - Ceiling Rose L250 - 5	

PHOTOMETRIC DATA

NOTE: All photometry is 3000K

Maximum Candela = 38.7



PHOTOMETRIC FILENAME : UBICA C-30 3000K NATURAL - PT9012034N.IES

Job Name/Date:

Fixture Type Designation: