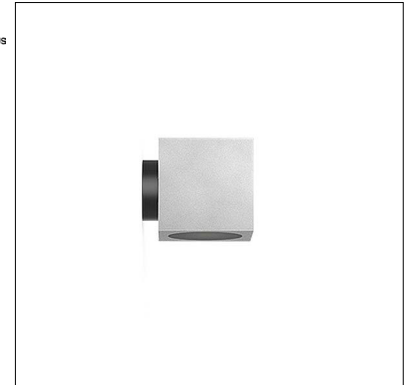


UBICA W-30

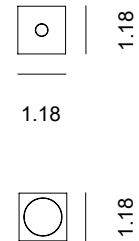
UBICA is a family of IP65-rated, stainless steel fixtures with a cube shape, suitable for wall, ceiling, suspension, or floor mounting installation. They offer diffuse illumination or blade of light for architectural accent solutions, and are available in 4 color temperatures and 3 standard Hard Coat Treatment finishes. UBICA W-30 is the wall mounted version with a bracket.



TECHNICAL DATA

| | |
|---------------------------|--|
| Wattage | 2W |
| Power Supply | Remote 700mA, not included. See page 2 |
| Construction | Body: AISI 316L Stainless Steel Lens: Polycarbonate |
| CCT | 2200K, 2700K, 3000K, 4000K |
| CRI | >80 |
| Delivered Lumens | 279 lm (3000K) |
| Efficacy | 139.5 lm/W (3000K) |
| Optics | Wide |
| Lumen Maintenance | L80, B10 @100.000h Ta=25°C |
| Hard Coat Finishes | Inox Natural, Inox Graphite, Inox Bronze |
| Fixture Dimensions | 1.18" l x 1.18" w x 1.18" h |
| IP Rating | IP65 |
| Impact Resistance | IK08 |
| Warranty | 2 Years Extendable to 5 Years |

Fixture Dimensions



Hard Coating Treatment is the surface treatment of all the products by Stral Lighting. It is not a skin of color, but instead is a process that allows for the color to be absorbed all the way through. If a product is scratched, the color beneath is the same as the color on the surface. It guarantees a high superficial resistance to corrosion and atmospheric agents, as well as making the products anti-fingerprint and anti-stain. Available in three finishes Inox Natural, Inox Graphite and Inox Bronze.

ORDERING INFORMATION

Example: SPT9013024B.US. Power Supplies / Accessories ordered separately.

| SPT90130 | | 4 | | .US |
|-----------|--|----------|--|-----|
| Model No. | CCT | Optics | Finishes | |
| SPT90130 | 1 - 2200K 2 - 2700K 3 - 3000K 4 - 4000K | 4 - Wide | N - Inox Natural G - Inox Graphite B - Inox Bronze | .US |

Job Name/Date:

Fixture Type Designation:

SUGGESTED POWER SUPPLIES

700mA

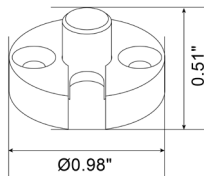
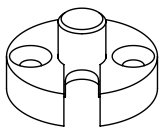
| Part Number | Description | Input/Output | # of Fixtures |
|-----------------------------|--|---|---------------|
| PPLT00537 | Non-Dim | 120-277VAC to 700mA, 4W, Class 2 | 1-1 |
| PPLT00498 | Phase Dim (120V only) | 120VAC to 700mA, 12W, Class 2 | 1-2 |
| PPLT00261 | Leading / Trailing Edge Dimming to 10% (120V only) | 120-277VAC to 700mA, 32W, Class 2 | 7-15 |
| PPLT00467-P | 0-10V Dimming to 1.0% | 120-277VAC to 700mA, 50W, Class 2, DAMP | 1-18 |
| PPLT00561-P | 0-10V Dimming to 0.1% | 120-277VAC to 700mA, 100W, Class 2 | 2-18 |

Suggested Lutron Compatible

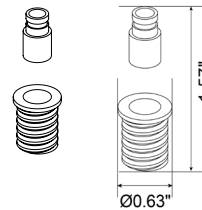
| Part Number | Option | Lutron SKU | Dim Range | Description | Input/Output | # of Fixtures |
|---------------------------|----------------|------------|-----------|--|-----------------------------------|---------------|
| PPLT00515 | L3DAE / L3DA3W | L3DA | 100%-1% | Hi-Lume™ 1% EcoSystem™ or 1% 3-Wire LED Driver | 120-277VAC to 700mA, 14W, Class 2 | 3-6 |
| PPLT00635 | PEQ0E | PEQ0 | 100%-0.1% | Hi-Lume Premier 0.1% EcoSystem™ LED Driver F2B | 120-277VAC to 700mA, 20W, Class 2 | 4-9 |
| PPLT00181 | L3DAE / L3DA3W | L3DA | 100%-1% | Hi-Lume™ 1% EcoSystem™ or 1% 3-Wire LED Driver | 120-277VAC to 700mA, 38W, Class 2 | 11-17 |

For other power supply options consult factory.

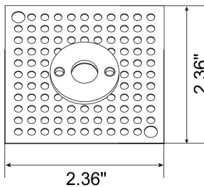
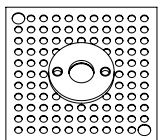
ACCESSORIES - Installation



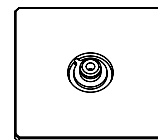
PT70006
Wall Anchoring Plate



PT70005
Corrugated Plug - Wood



PT70009
Corrugated Wall Plate
Compatible with brick and plasterboard walls



PT70010
Cover Flange



Silk-screened Tempered Glass Cover Flange
for UBICA C-30 AR, W-30 and C-30

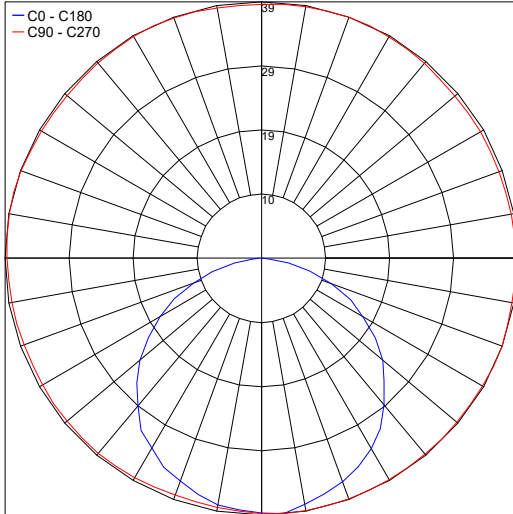
Job Name/Date:

Fixture Type Designation:

PHOTOMETRIC DATA

NOTE: All photometry is 3000K

Maximum Candela = 38.7



PHOTOMETRIC FILENAME : UBICA W-30 3000K NATURAL - PT9013034N.IES

Job Name/Date:

Fixture Type Designation: