

Pixel is a family of miniature, recessed downlights inspired by the Genius family and characterized by a 0.6 inch diameter and simple, refined lines. The installation space is reduced and the mechanism is also simplified, with LED maintenance easily carried out through the emission hole. Pixel IP65 is the outdoor version made of Coral WaterOut®.

TECHNICAL DATA

Wattage / Input	8.5W (700mA)
Power Supply	Remote, not included. See page 2.
Construction	Body: Coral WaterOut®
CCT	2700K, 3000K 4000K on request
CRI	90
Delivered Lumens	555 lm (3000K)
Efficacy	65.3 lm/W
Optics	15°, 25°, 45°
Finishes	Coral WaterOut® Plaster - Unfinished
LED Source	COB professional LED
Fixture Dimensions	5.91" l x 5.91" w x 1.38" h
Aperature	Ø0.63"
IP Rating	IP65

The body is made of Coral WaterOut® a unique patented composite material highly resistant to water penetration - made from modifying the structure of Coral®. This water-repellant effect remains unchanged over time as it is not a matter of a superficial finish, but rather a structural feature of the material itself.

This material is therefore ideally suited to IP65/IP44-rated recessed lighting, suitable for use in external environments, and ideal for light systems in spas, wellness clubs, massage centres, swimming-pools, bathrooms, and all other locations where water and humidity restrict the choice of technical lighting.

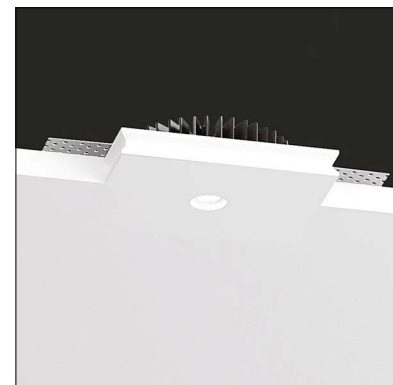
ORDERING INFORMATION

Example: BU1018.CW 4S 15 M 30.WD.US. Power Supplies / Accessories ordered separately.

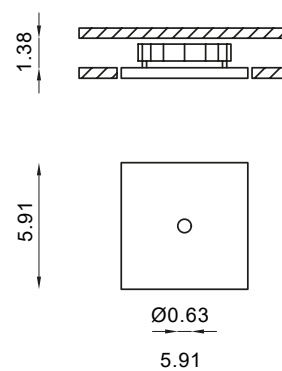
BU1018.CW 4S			WD.US
Model No.	Optics	CCT	
BU1018.CW 4S	15 M - 15°	27 - 2700K	WD.US
	25 M - 25°	30 - 3000K	
	45 M - 45°	40 - 4000K (on request)	

Job Name/Date:

Fixture Type Designation:



Fixture Dimensions



SUGGESTED POWER SUPPLIES

700mA

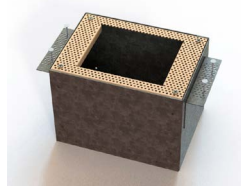
Part Number	Description	Input/Output	# of Fixtures
PPLT00470	Phase Dim (120V only)	120VAC to 700mA, 14W, Class 2	1-1
PPLT00465-P	0-10V Dimming to 1.0%	120-277VAC to 700mA, 20W, Class 2	1-2
PPLT00261	Leading / Trailing Edge Phase Dim to 10% (120V only)	120-277VAC to 700mA, 32W, Class 2	2-3
PPLT00309-P	0-10V Dimming to 0.1%	120-277VAC to 700mA, 50W, Class 2, DAMP	1-4

Suggested Lutron Compatible

Part Number	Option	Lutron SKU	Dim Range	Description	Input/Output	# of Fixtures
PPLT00515	L3DAE / L3DA3W	L3DA	100%-1%	Hi-Lume™ 1% EcoSystem™ or 1% 3-Wire LED Driver	120-277VAC to 700mA, 14W, Class 2	1-1
PPLT00673	PEQ0E	PEQ0	100%-0.1%	Hi-Lume Premier 0.1% EcoSystem™ LED Driver (F2B)	120-277VAC to 700mA, 20W, Class 2	1-2
PPLT00181	L3DAE / L3DA3W	L3DA	100%-1%	Hi-Lume™ 1% EcoSystem™ or 1% 3-Wire LED Driver	120-277VAC to 700mA, 38W, Class 2	3-4

For other power supply options consult factory.

ACCESSORIES - Installation

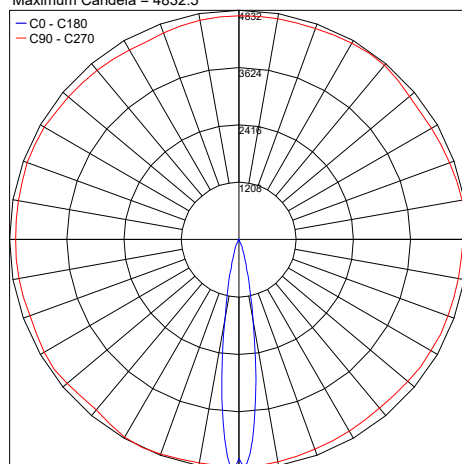


BR1018LT
Back Box

PHOTOMETRIC DATA

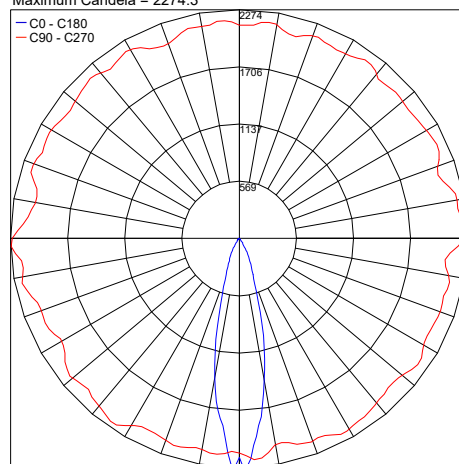
Note: All photometry is 3000K

Maximum Candela = 4832.5



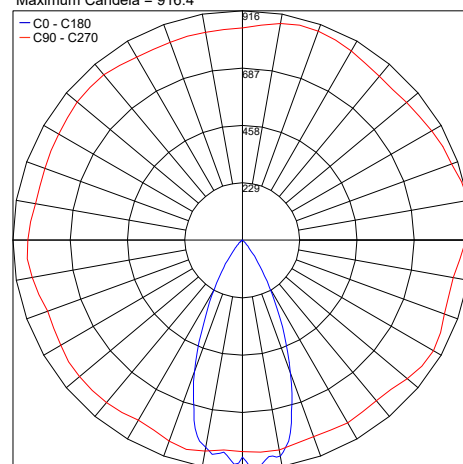
PHOTOMETRIC FILENAME : PIXEL 15° 3000K - BU1007.AC4R15M30WD.IES

Maximum Candela = 2274.3



PHOTOMETRIC FILENAME : PIXEL 25° 3000K - BU1007.AC4R25M30WD.IES

Maximum Candela = 916.4



PHOTOMETRIC FILENAME : PIXEL 45° 3000K - BU1007.AC4R45M30WD.IES

Job Name/Date:

Fixture Type Designation: