

Pixel is a miniature, recessed downlight made of AirCoral® inspired by the Genius family and characterized by a 0.6 inch diameter and simple, refined lines. The installation space is reduced and the mechanism is also simplified, with LED maintenance easily carried out through the emission hole.

## TECHNICAL DATA

<b>Wattage / Input</b>	8.5W (700mA)
<b>Power Supply</b>	Remote, not included. See page 2.
<b>Construction</b>	Body: AirCoral®
<b>CCT</b>	2700K, 3000K 4000K on request
<b>CRI</b>	90
<b>Delivered Lumens</b>	555 lm (3000K)
<b>Efficacy</b>	65.3 lm/W
<b>Optics</b>	15°, 25°, 45°
<b>Finishes</b>	AirCoral® Plaster - Unfinished
<b>LED Source</b>	COB professional LED
<b>Fixture Dimensions</b>	5.91" l x 5.91" w x 1.38" h
<b>Aperature</b>	Ø0.63"
<b>IP Rating</b>	IP40

The body is made of Aircoral® a unique patented composite material that actually purifies the air. It can be calculated how many cubic feet each fixture will purify. See website for Aircoral® calculator.

Additionally, Aircoral® is:

- Antibacterial.
- Antifungal.
- Scratch-resistant.
- Dust-resistant.
- Suitable for painting.
- LEED recognized material.

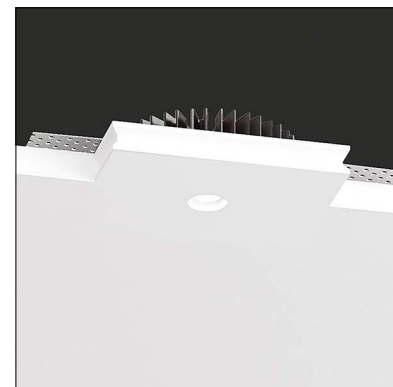
## ORDERING INFORMATION

Example: BU1007.AC 4R 15 M 30.WD.US. Power Supplies / Accessories ordered separately.

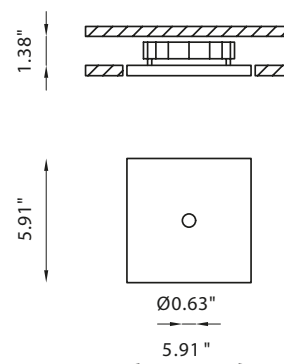
<b>BU1007.AC 4R</b>			<b>WD.US</b>
<b>Model No.</b>	<b>Optics</b>	<b>CCT</b>	
<b>BU1007.AC 4R</b>	<b>15 M - 15°</b>	<b>27 - 2700K</b>	<b>WD.US</b>
	<b>25 M - 25°</b>	<b>30 - 3000K</b>	
	<b>45 M - 45°</b>	<b>40 - 4000K (on request)</b>	

Job Name/Date:

Fixture Type Designation:



Fixture Dimensions



## SUGGESTED POWER SUPPLIES

700mA

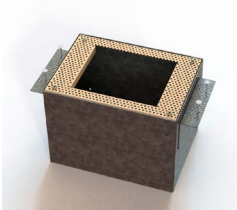
Part Number	Description	Input/Output	# of Fixtures
<a href="#">PPLT00470</a>	Phase Dim (120V only)	120VAC to 700mA, 14W, Class 2	1-1
<a href="#">PPLT00465-P</a>	0-10V Dimming to 1.0%	120-277VAC to 700mA, 20W, Class 2	1-2
<a href="#">PPLT00261</a>	Leading / Trailing Edge Phase Dim to 10% (120V only)	120-277VAC to 700mA, 32W, Class 2	2-3
<a href="#">PPLT00309-P</a>	0-10V Dimming to 0.1%	120-277VAC to 700mA, 50W, Class 2, DAMP	1-4

## Suggested Lutron Compatible

Part Number	Option	Lutron SKU	Dim Range	Description	Input/Output	# of Fixtures
<a href="#">PPLT00515</a>	L3DAE / L3DA3W	L3DA	100%-1%	Hi-Lume™ 1% EcoSystem™ or 1% 3-Wire LED Driver	120-277VAC to 700mA, 14W, Class 2	1-1
<a href="#">PPLT00673</a>	PEQ0E	PEQ0	100%-0.1%	Hi-Lume Premier 0.1% EcoSystem™ LED Driver (F2B)	120-277VAC to 700mA, 20W, Class 2	1-2
<a href="#">PPLT00181</a>	L3DAE / L3DA3W	L3DA	100%-1%	Hi-Lume™ 1% EcoSystem™ or 1% 3-Wire LED Driver	120-277VAC to 700mA, 38W, Class 2	3-4

For other power supply options consult factory.

## ACCESSORIES - Installation

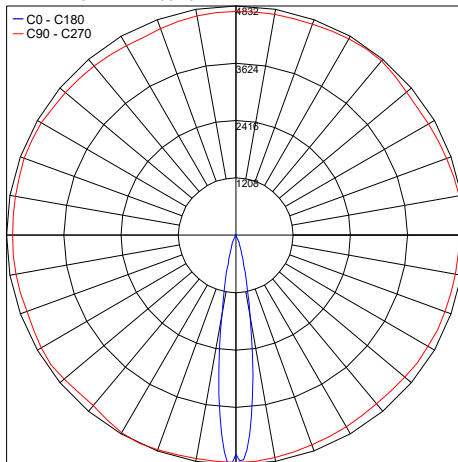


**BR1007** -   
Back Box  
Include one of the below options:  
**LT** - IC Rated / JA8 Rated  
**LT-C** - Chicago Plenum

## PHOTOMETRIC DATA

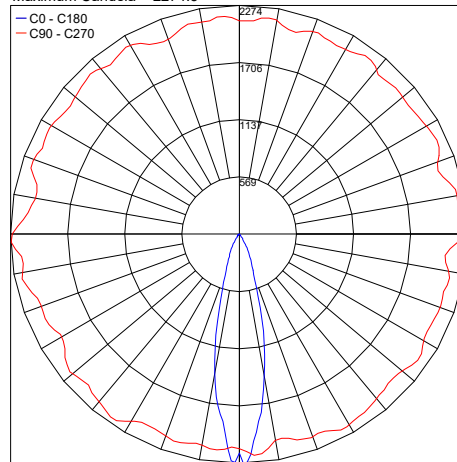
Note: All photometry is 3000K

Maximum Candela = 4832.5



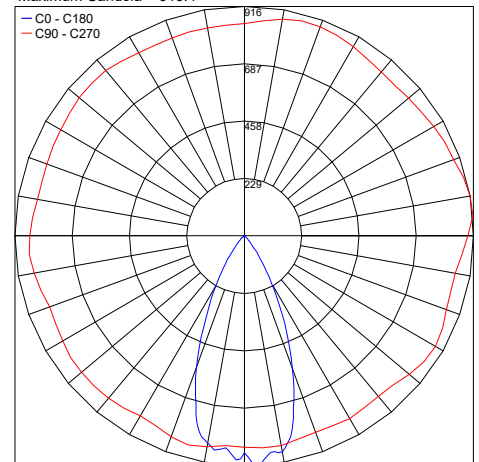
PHOTOMETRIC FILENAME : PIXEL 15° 3000K - BU1007.AC4R15M30WD.IES

Maximum Candela = 2274.3



PHOTOMETRIC FILENAME : PIXEL 25° 3000K - BU1007.AC4R25M30WD.IES

Maximum Candela = 916.4



PHOTOMETRIC FILENAME : PIXEL 45° 3000K - BU1007.AC4R45M30WD.IES

Job Name/Date:

Fixture Type Designation: