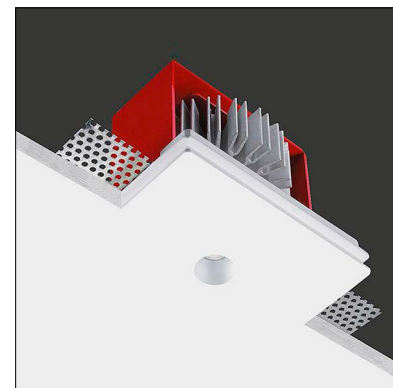


Genius Kelvin is a small and powerful recessed LED downlight, with an aperture less than 1" in diameter, offered in color temperatures other than the normal Genius (2200K, 2700K, 3500K). Easy access to LED module via a unique spring loaded mechanism. JA8-2016 Certified and can be used in IC, Chicago Plenum ceilings.



TECHNICAL DATA

Wattage / Input	6W (350mA)
Power Supply	Remote, not included. See page 2
Construction	Body: AirCoral® Frame: Steel Aluminum Heat Sink
CCT	2200K, 2400K, 3500K
CRI	>90
Delivered Lumens	421 lm (3500K)
Efficacy	70.2 lm/W
Optics	24°, 40°
Finishes	Unfinished
Cut-Out Dimensions	5.31" x 4.33"
Fixture Dimensions	4.92" x 3.94" x 5.31" h
Aperture	Ø0.79"
Fixture Weight	1.76 lbs
LED Source	1 COB LED Removalable Cartridge
IP Rating	IP20
JA8	Certified

The body is made of AirCoral® a unique patented composite material that actually purifies the air. It can be calculated how many cubic feet each fixture will purify. See website for AirCoral® calculator.

Additionally, AirCoral® is:

- Antibacterial.
- Antifungal.
- Scratch-resistant.
- Dust-resistant.
- Suitable for painting.
- LEED recognized material.

ORDERING INFORMATION

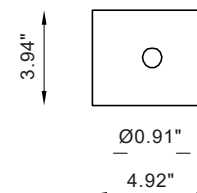
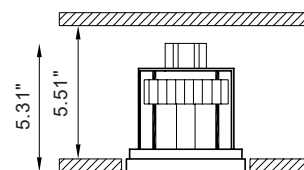
Example: BU1874.AC.4R40M.35.WD.US. Accessories / Power Supplies ordered separately.

BU1874	AC			WD.US
Model No.	Material	Optics	CCT	
BU1874	AC - AirCoral®	4R24M - 24° 4R40M - 40°	22 - 2200K 24 - 2400K 35 - 3500K	WD.US

Job Name/Date:

Fixture Type Designation:

Ceiling Cut-Out: 5.31" x 4.33"
Fixture Dimensions:



SUGGESTED POWER SUPPLIES

JA8 Compatible (Also for General Use)

Part Number	Description	Input/Output	# of Fixtures
PPLT00466-P	0-10V Dimming to 1.0%	120-277VAC to 350mA, 10W, Class 2, DAMP	1 - 1

SUGGESTED POWER SUPPLIES

350mA (Not JA8 Compatible)

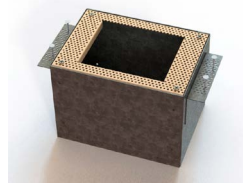
Part Number	Description	Input/Output	# of Fixtures
PPLT00498	Phase Dim (120V only)	120VAC to 350mA, 12W, Class 2, DAMP	1 - 1
PPLT00465-P	0-10V Dimming to 1.0%	120-277VAC to 350mA, 20W, Class 2, DAMP	1 - 2
PPLT00309-P	0-10V Dimming to 0.1%	120-277VAC to 350mA, 50W, Class 2, DAMP	1 - 2
PPLT00561-P	0-10V Dimming to 0.1%	120-277VAC to 350mA, 50W, Class 2	1 - 3

Suggested Lutron Compatible (Not JA8 Compatible)

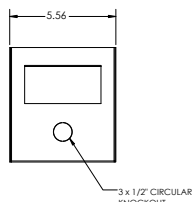
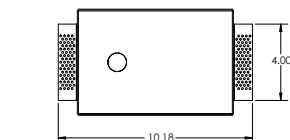
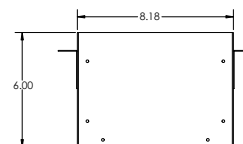
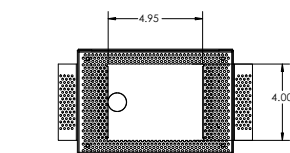
Part Number	Option	Lutron SKU	Dim Range	Description	Input/Output	# of Fixtures
PPLT00247	L3DAE / L3DA3W	L3DA	100%-1%	Hi-lume™ 1% EcoSystem™ / 1% 3-Wire LED Driver	120-277VAC to 350mA, 7W	1-1
PPLT00516	L3DAE / L3DA3W	L3DA	100%-1%	Hi-lume™ 1% EcoSystem™ / 1% 3-Wire LED Driver	120-277VAC to 350mA, 13W	1-2

For other power supply options consult factory.

ACCESSORIES - Installation



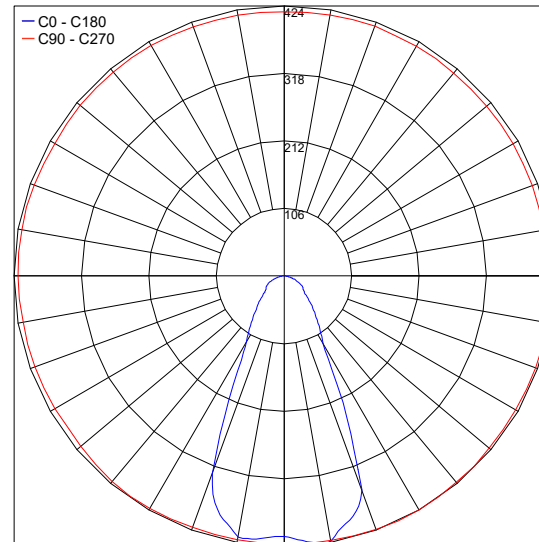
BR1855 - ____
Back Box
Include one of the below options:
LT - IC Rated / JA8 Rated
LT-C - Chicago Plenum



PHOTOMETRIC DATA

Note: Photometry is 3500K

Maximum Candela = 423.5



PHOTOMETRIC FILENAME : GENIUS KELVIN 6W 350MA 40° 3500K - BU1874.IES

Job Name/Date:

Fixture Type Designation: