



**INSTRUCTIONS PERTAINING TO RISK OF FIRE OR INJURY TO PERSONS. READ ALL INSTRUCTIONS. IMPORTANT SAFETY INSTRUCTIONS. SAVE THESE INSTRUCTIONS.**

**DANGER - RISK OF SHOCK - DISCONNECT POWER BEFORE INSTALLATION! Please read all instructions before installation.**

- Keep these instructions for future reference.
- Must be installed by a qualified electrician in accordance with national and local standards. Designplan is not responsible for fixtures installed without regard to these standards.
- The main power connection must be in accordance with local electrical codes.
- Unauthorized alterations or tampering of product voids warranty.
- Suitable for INDOOR applications.
- DO NOT INSTALL INSULATION WITHIN 3.0" (76 mm) OF ANY PART OF THE LUMINAIRE.



## Electrical Connections:

- LED lights must be **connected in series** respecting polarities.
- **CHOOSE POWER SUPPLY ACCORDINGLY.** Please consider the voltage through which fixtures are fed as well as the max power consumption.
- **Connect power only if all fixtures are connected.**
- The power supplies **MUST** be installed in aerated rooms, far from heat sources. Overworking or lack of air circulation will not permit natural dissipation.
- The electronic power supply is current-stable, therefore it partially compensates the voltage-drop problems related to the cable length; we suggest not to exceed 100 ft.
- Use only Class 2 type electronic power supply.
- Never use switches on secondary circuit.

**ATTENTION: For Wall/Ceiling** - It is the contractor's responsibility to caulk around all the edges between the fixture and the mounting surface to satisfy wet label requirements. Contractor **MUST** use gel-filled wire nuts.

## Maintenance

Scheduled maintenance must be carried out once a year on all lighting devices, regardless of appliance class and type of use. It must include the following operations:

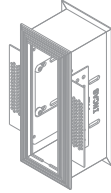
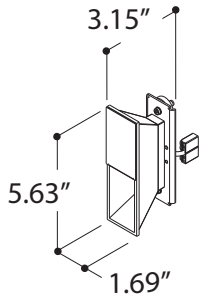
- Periodically clean fixtures to remove dirt from gratings and screw heads.
- Check tightness of screws on various parts of the device.
- Check that all cable glands and cables are intact and tight. Check that the glass or plastic screen is intact, and replace it if broken or damaged.
- The internal components such as the ballast, driver, washers and screws must not show clear signs of oxidation or rust. Clear traces of rust and oxidation will indicate the presence of water inside the device.
- In the case of damage, the components must be replaced by original components or spare parts.

# BOA WALL TRIMLESS RECESSED

7W, REMOTE 700mA

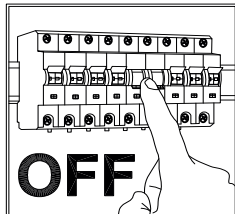
installation instructions

## FIXTURE DIMENSION:

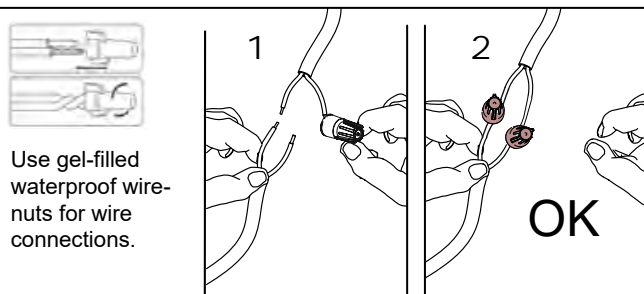


701117 BOA TRIMLESS FRAME  
(not incl.)

## FIXTURE INSTALLATION



- It is the contractor's responsibility to caulk around all the edges between the fixture and the mounting surface, to satisfy wet label requirements.
- It is the contractor's responsibility to install Remote Driver in a suitable electrical enclosure.

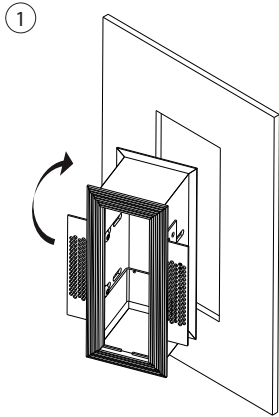


Use gel-filled waterproof wire-nuts for wire connections.

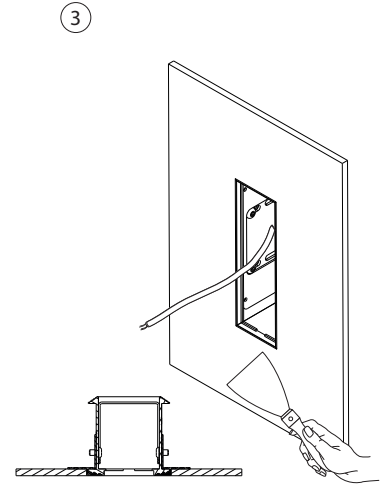
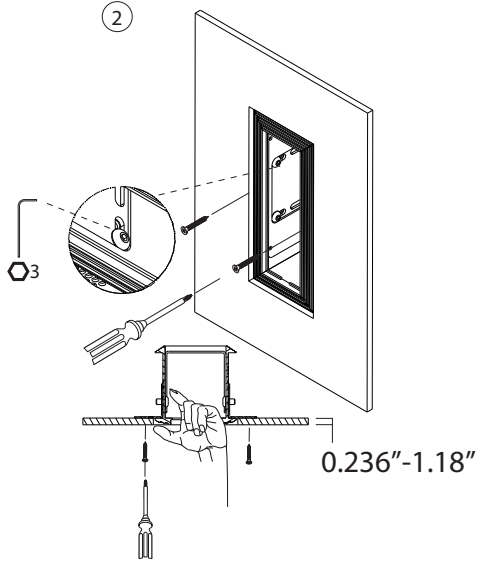
# BOA WALL TRIMLESS RECESSED

7W, REMOTE 700mA

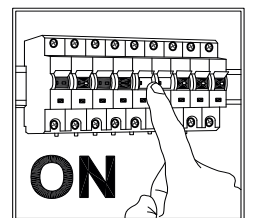
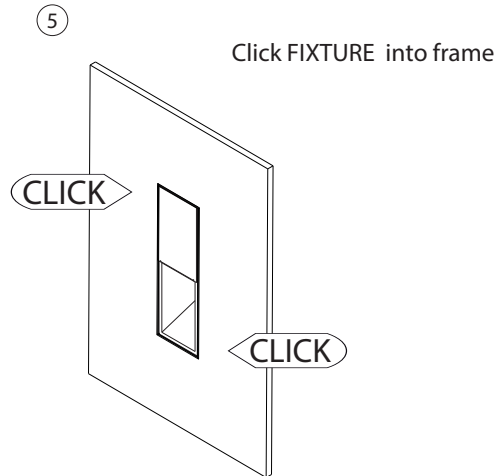
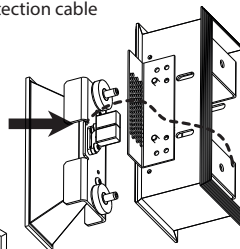
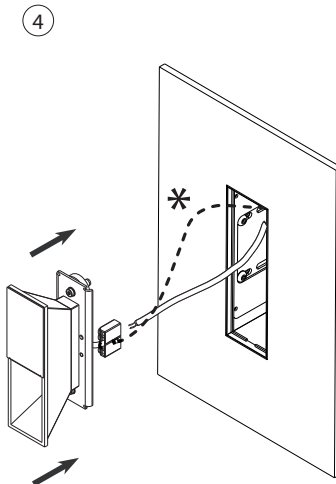
installation instructions



Make Hole size : 6.89" x 2.95"  
(min depth 3.15")



hook-in connect fall protection cable  
\*



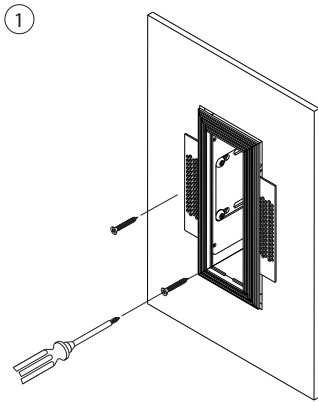
# BOA WALL TRIMLESS RECESSED

7W, REMOTE 700mA

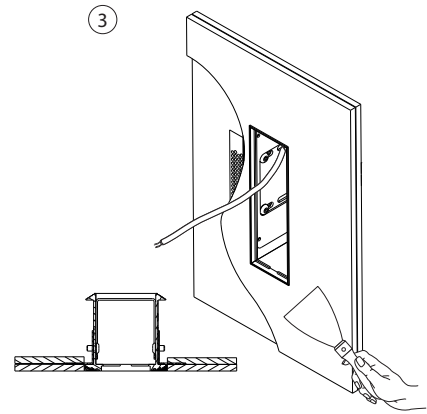
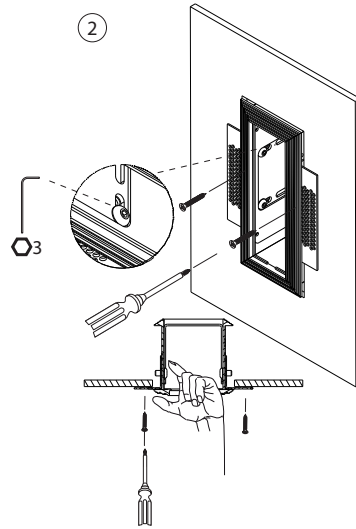
installation instructions

## B. BOA TRIMLESS FRAME ON (HOLLOW WALL)

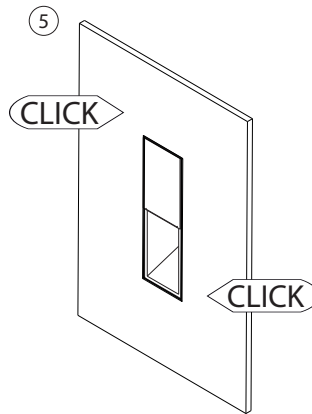
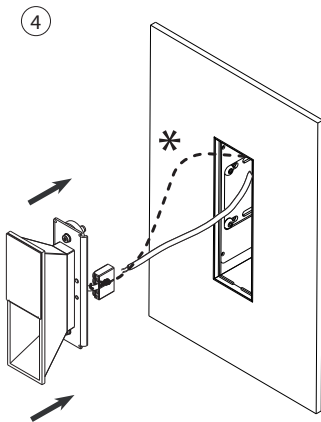
USE 701117 BOA TRIMLESS FRAME



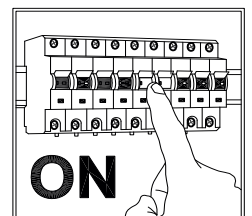
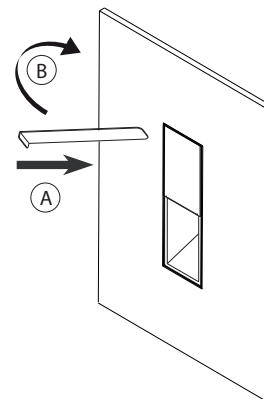
Make Hole size : 6.89 x 2.95"  
(min depth 3.15")



PLASTER THICKNESS MINIMUM 0.236"  
MAXIMUM 1.18"



## 6 Removal tool



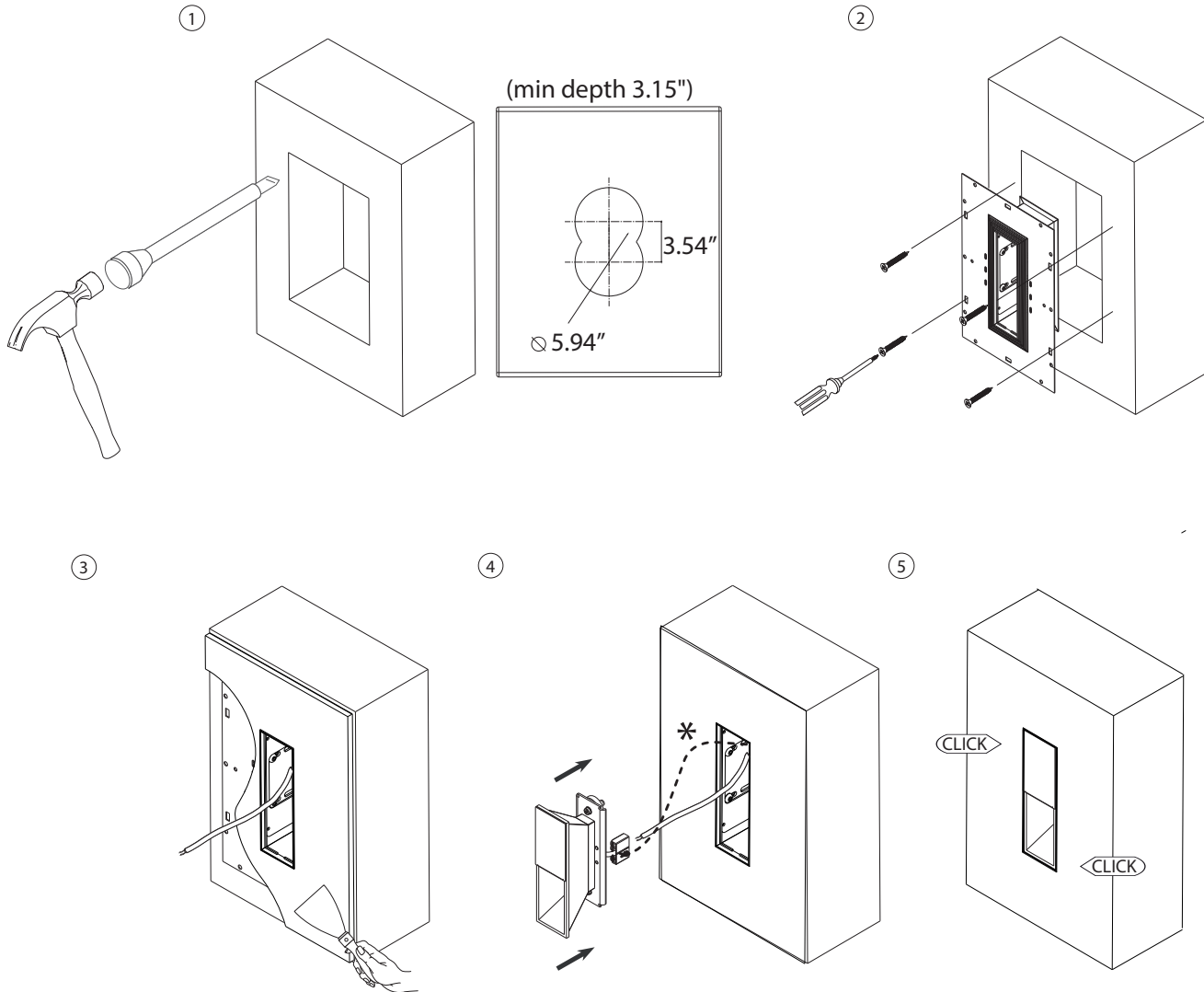
# BOA WALL TRIMLESS RECESSED

7W, REMOTE 700mA

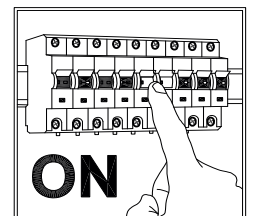
installation instructions

## C. BOA TRIMLESS FRAME ON PLASTERBOARD (BRICK WALL)

USE 701187 BOA TRIMLESS FRAME FOR PLASTERED CONCRETE SLABS



PLASTER THICKNESS MINIMUM 0.236"  
MAXIMUM 1.18"



# BOA WALL TRIMLESS RECESSED

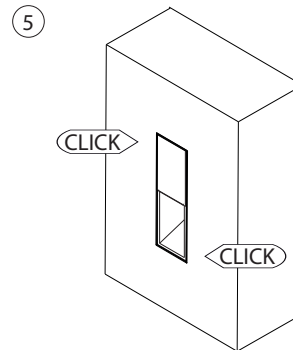
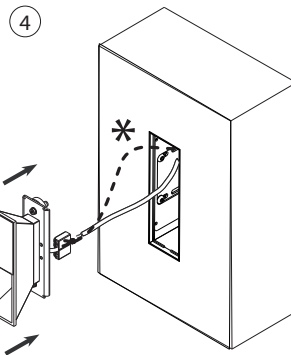
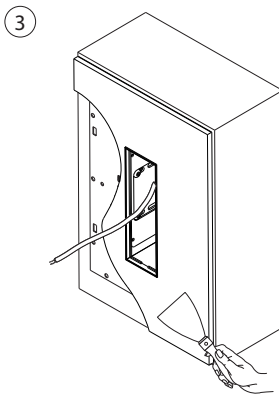
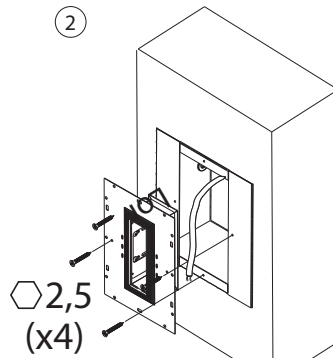
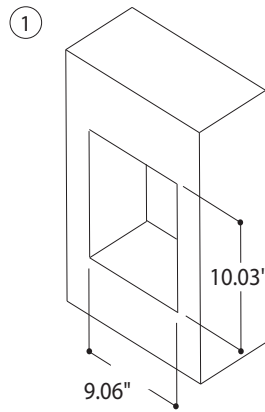
7W, REMOTE 700mA

installation instructions

## D. BOA TRIMLESS FRAME ON CONBOX (BRICK WALL)

USE 701177 BOA TRIMLESS FRAME + BOX FOR PLASTER

BOX DIM:  
10.03"x 9.06" X H5.12"



PLASTER THICKNESS MINIMUM 0.236"  
MAXIMUM 1.18"

