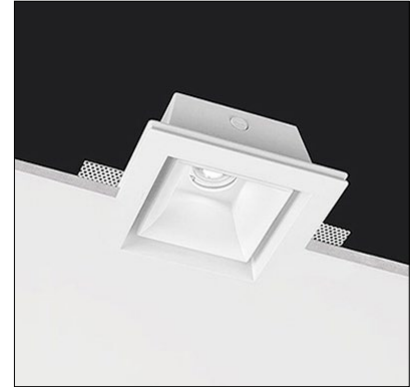
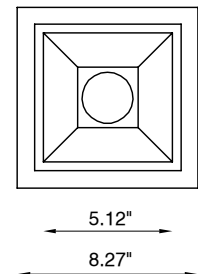
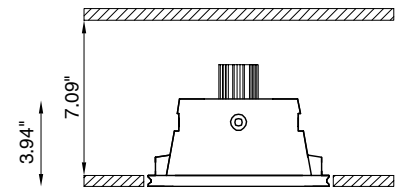


Bell is an indoor and discreet recessed fixture that can be installed on plasterboard walls and ceilings. With a body made of AirCoral®, the backward light source casts a sharp beam which softly scatters the light on the body surface and in the environment.



Ceiling Cut-Out: 8.66" x 8.66"

Fixture Dimensions:  
8.27" l x 8.27" w x 3.94" h



## TECHNICAL DATA

<b>Wattage / Input</b>	9W (500mA)
<b>Power Supply</b>	Remote, not included. See page 2.
<b>Construction</b>	Body: AirCoral®
<b>CCT</b>	2700K, 3000K, 4000K
<b>CRI</b>	>90
<b>LED Lumens</b>	641 lm (3000K)
<b>Efficacy</b>	64.1 lm/W
<b>Optics</b>	40° wide beam
<b>Finishes</b>	Unfinished
<b>Cut-Out Dimensions</b>	8.66" x 8.66"
<b>Fixture Dimensions</b>	8.27" l x 8.27" w x 3.94" h
<b>Aperture</b>	Ø1.97"
<b>Fixture Weight</b>	1.43 lbs
<b>LED Source</b>	1 COB Professional LED
<b>IP Rating</b>	IP20

The body is made of Aircoral® a unique patented composite material that actually purifies the air. It can be calculated how many cubic feet each fixture will purify. See website for Aircoral® calculator.

Additionally, Aircoral® is:

- Antibacterial.
- Antifungal.
- Scratch-resistant.
- Dust-resistant.
- Suitable for painting.
- LEED recognized material.

## ORDERING INFORMATION

Example: BU1901.30.AC.US. Power Supplies ordered separately.

BU1901.	.		.	AC	.	US
<b>Model No.</b>	<b>CCT</b>	<b>Finish</b>				
BU1901.	30 - 3000K (standard) 27 - 2700K 40 - 4000K	AC - AirCoral®				US

Job Name/Date:

Fixture Type Designation:

## SUGGESTED POWER SUPPLIES

500mA

Part Number	Description	Input/Output	# of Fixtures
<a href="#">PPLT00469</a>	Phase Dim (120V only)	120VAC to 500mA, 14W, Class 2	1-1
<a href="#">PPLT00467-P</a>	0-10V Dimming to 1%	120-277VAC to 500mA, 50W, Class 2	1-2
<a href="#">PPLT00561-P</a>	0-10V Dimming to 0.1%	120-277VAC to 500mA, 100W, Class 2	1-3

## Suggested Lutron Compatible

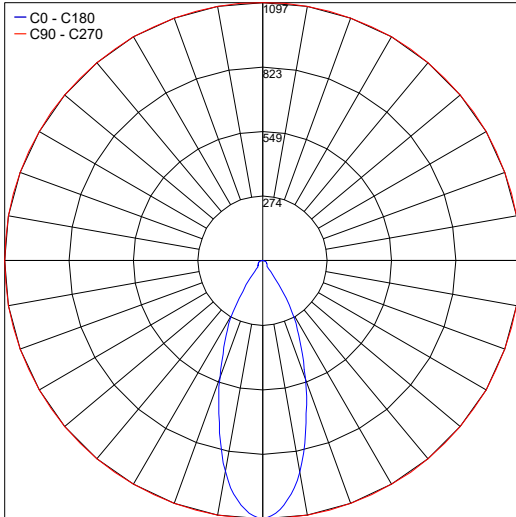
Part Number	Option	Lutron SKU	Dim Range	Description	Input/Output	# of Fixtures
<a href="#">PPLT00259</a>	L3DAE / L3DA3W	L3DA	100%-1%	Hi-Lume™ 1% EcoSystem™ or 1% 3-Wire LED Driver	120-277VAC to 500mA, 10W, Class 2	1-1
<a href="#">PPLT00195</a>	L3DAE / L3DA3W	L3DA	100%-1%	Hi-Lume™ 1% EcoSystem™ or 1% 3-Wire LED Driver	120-277VAC to 500mA, 19W, Class 2	1-2
<a href="#">PPLT00180</a>	L3DAE / L3DA3W	L3DA	100%-1%	Hi-Lume™ 1% EcoSystem™ or 1% 3-Wire LED Driver	120-277VAC to 500mA, 27W, Class 2	2-2

For other power supply options consult factory.

## PHOTOMETRIC DATA

Note: All photometry is 3000K

Maximum Candela = 1097



Job Name/Date:

Fixture Type Designation: