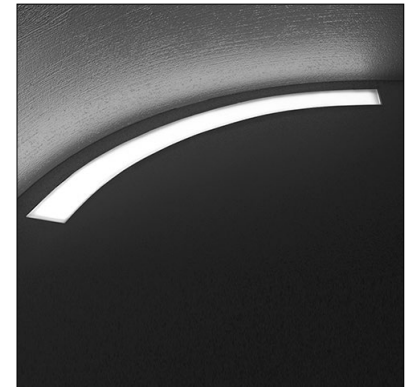


# MIN / MAX - CURVA IP67

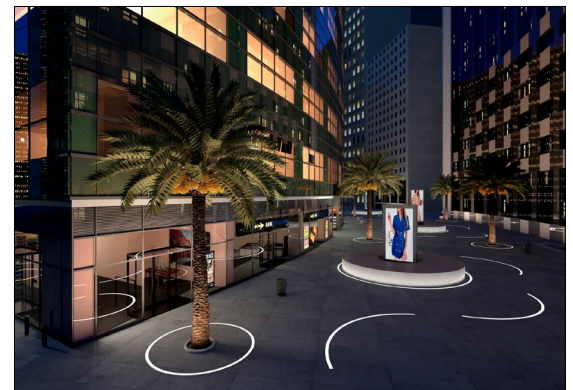
MIN / MAX Curva is a linear, curved IP67-rated LED luminaire for flush installation on floors in indoor or outdoor areas. It is available in 6 different curvatures with antislip or sandblasted glass. Driveover rated up to 11,000 lbs. Pressure switch on request. Can be ordered in IP68 stainless steel version suitable for fountains - see Fountain Lighting section.



Fixture Dimensions - See page 2

## TECHNICAL DATA

<b>Wattage / Input</b>	20W
<b>Power Supply</b>	Remote, not included. See page 2.
<b>Construction</b>	Body: Anticorodal Aluminum Protected by 25 Micron Lens: Extra Clear Tempered Glass Cable Length: 1.64'
<b>CCT</b>	2700K, 3000K, 4000K (RGBW or Tunable White on request)
<b>BUG Rating</b>	Coming Soon
<b>Delivered Lumens</b>	1520-1760 lm (3000K)
<b>Efficacy</b>	76-88 lm/W (3000K)
<b>Optics</b>	Diffuse
<b>Finishes</b>	Antislip or Sandblasted Glass
<b>Fixture Dimensions</b>	46.4" l x 3.94" w x 1.57" h (various curvatures)
<b>Color Consistency</b>	3-Step MacAdam
<b>IP Rating</b>	IP67
<b>Impact Resistance</b>	IK10
<b>Driveover Capacity</b>	Up to 11,000 lbs



## ORDERING INFORMATION

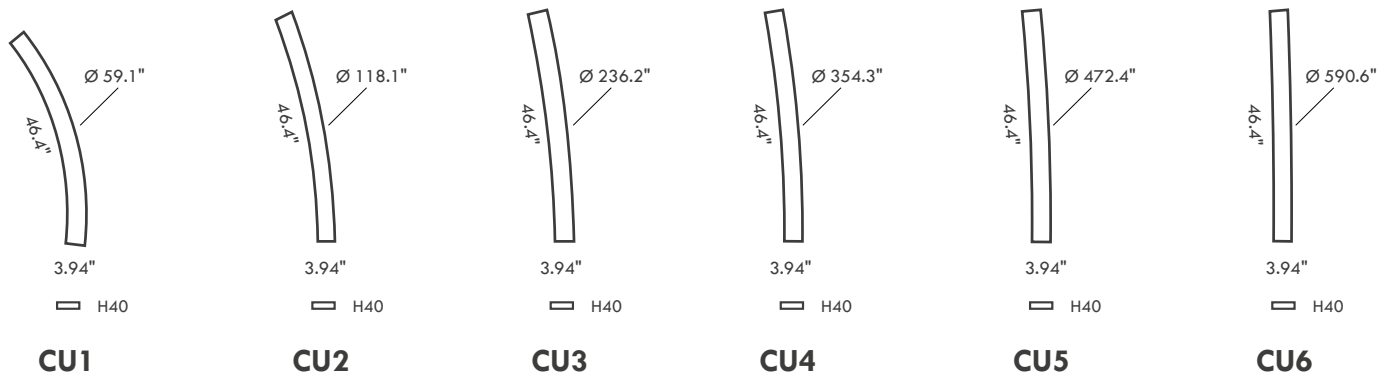
Example: LM07.104859.US.A1.DI.BP. Accessories / Power Supplies ordered separately.

<input type="text"/>	<input type="text"/>	<b>DI</b>	<input type="text"/>
Model No.	Finish	Optic	CCT
LM07.104857.US (CU1)	A1 - Antislip Glass	DI - Diffuse	BC - 2700K
LM07.104859.US (CU2)	60 - Sandblasted Glass		BP - 3000K
LM07.104861.US (CU3)			BF - 4000K
LM07.104865.US (CU4)			
LM07.104885.US (CU5)			
LM07.104887.US (CU6)			

Job Name/Date:

Fixture Type Designation:

## FIXTURE DIMENSIONS



## SUGGESTED POWER SUPPLIES

24VDC

Part Number	Description	Input/Output	# of Fixtures					
			CU1	CU2	CU3	CU4	CU5	CU6
<a href="#">PPLT00543</a>	0-10V Dimming to 15% (-40°C / -40°F cold weather start)	120-277VAC to 24VDC, 100W, Class 2	1-4	1-4	1-4	1-4	1-4	1-4

For other power supply options consult factory.

## ACCESSORIES - Installation



**LM20.104865** (CU1 - IP67)  
**LM20.104867** (CU2 - IP67)  
**LM20.104869** (CU3 - IP67)  
**LM20.104871** (CU4 - IP67)  
**LM20.104880** (CU5 - IP67)  
**LM20.104882** (CU6 - IP67)  
 IP67 Housing



**LM20.104879**  
 Pair of Closing End caps



**LM20.104464**  
 Light Source Extraction Tool Kit



**LM20.104813**  
 Pair of joints for Curva to Curva continuous line

**LM20.104873**  
 Pair of joints for Curva to Linea continuous line

Job Name/Date:

Fixture Type Designation:

## PHOTOMETRIC DATA

*Job Name/Date:*

*Fixture Type Designation:*